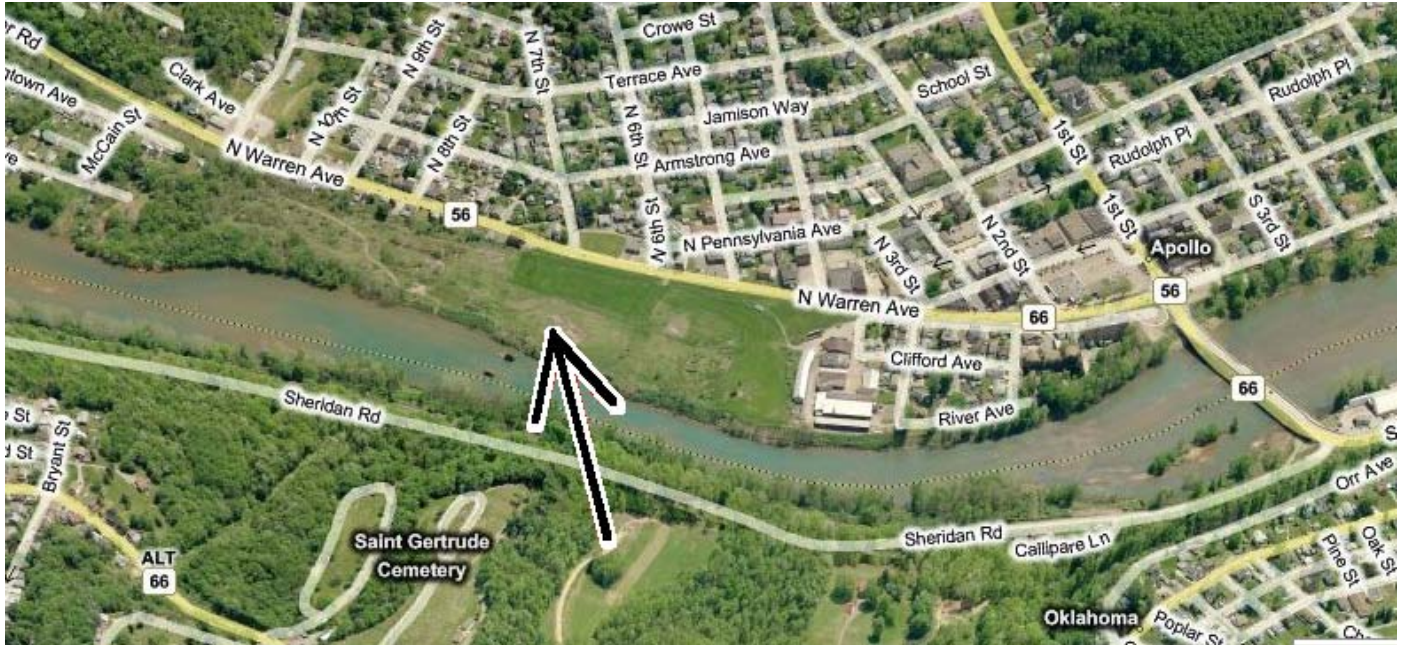


PRIME LAND AVAILABLE



Apollo Borough Riverfront Parcel

Apollo Borough, dedicated to job-creating and job Retention in our community, is offering the LEASE or SALE of ALL or PART of the Borough's 22+/- acre riverfront parcel. All public utilities available / environmental remediation cleanup completed.

Zoned Light Industrial/Commerce with Town Center Overlay. New public road along the river to be completed in 2012.

For an appointment
Call Lori @ 724.478.4201 Ext. 1